

Diver: ..... Date: ..... Time: ..... Site: ..... Depth: .....(m)



Invertebrate  
Slate v2

Supported in part by funds from the Project AWARE Foundation

*Cenolia*  
Feather stars  
(Generally orange)



Notes:

*Holothurians*  
Sea cucumbers



*Phyllacanthus*  
Slate pencil urchin



*Goniocidaris*  
(Spines encrusted)



*Heliocidaris*  
(Medium length spines, deep purple, brown, or white colouration)



*Centrostephanus*  
(Long, grey, shimmering spines)



*Pentagonaster*  
Firebrick star



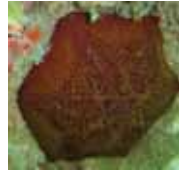
*Tosia*  
Biscuit star



*Petricia*  
Velvet Star



*Patiriella brevispina*  
(Hexagonal, brown with orange on underside)



*Coscinasterias*  
11 arm seastar



*Uniophora*



*Nepanthia*



*Patiriella calcar*  
(8 arms)



*Amblypneustes*  
(Short, softer spines, golf ball size, cream colour)



*Holopneustes*  
(Short, softer spines, cricket ball size, deep red colour)



*Plagusia*  
(Red legs with felty covering)



*Nectocarcinus*  
(Black tips on claws)



Greenlip abalone



Queen Scallop



*Dicathais*



*Phasianella*



Hermit Crabs



Rock Lobster



Black lipped abalone



Whelks/tritons



*Turbo undulatus*



*Turbo torquatus*



Small Fish  
(approx. 5cm, eg. threefin, stinkfish)



Western Blue Devil



Bullseye



Moonlighter



Western Talma



ReefWatch

Conservation Council of SA Inc  
120 Wakefield Street, ADELAIDE, SA 5000  
Ph 08 8223 5155  
www.reefwatch.asn.au, Info@reefwatch.asn.au

Photo credits; *Patiriella calcar*, *Turbo torquatus*, *Coscinasterias* by Graham Edgar; *Uniophora* by David Muirhead; Whelk (top) by Chris Hall; Hermit crab by Howard Warren. Fish illustrations by Roger Swainston.