



Monitoring of Noarlunga Reef Fish Populations – Championed by SODS

Results from Noarlunga Reef Fish Surveys

The most abundant species or species groups recorded during 283 surveys over a decade of monitoring by Reef Watch divers were:



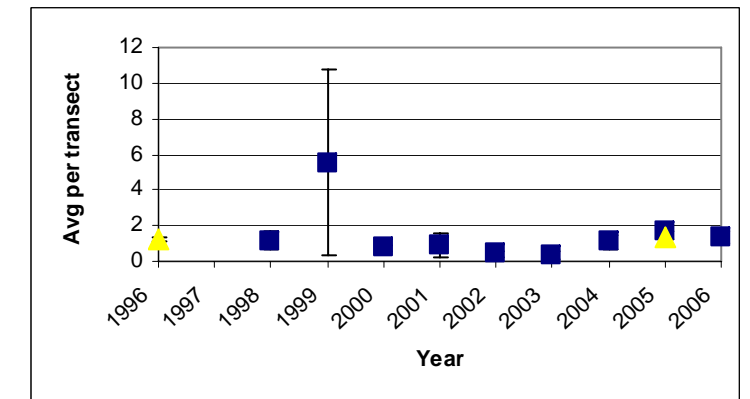
Hulafish	18277
Bullseye	3049
Leatherjacket	2423
Sweep	2092
Drummer	1125
Old Wife	776
Magpie Perch	704
Long-Finned Pike	636
Goat Fish	597
Western Talma	578
Moonlighter	534
Wrasse	389
Dusky Morwong	267



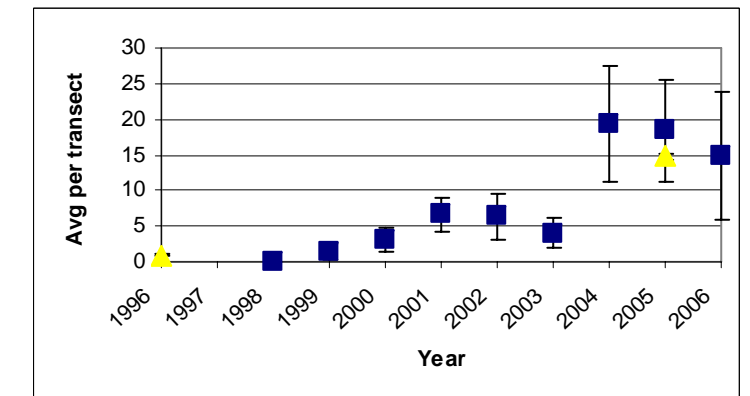
Fish Survey Data for Noarlunga Reef – Graphs of Selected Species

All Reef Watch data, 1998 to present (blue squares), and scientific surveys from 1996 and 2005 (yellow triangles).

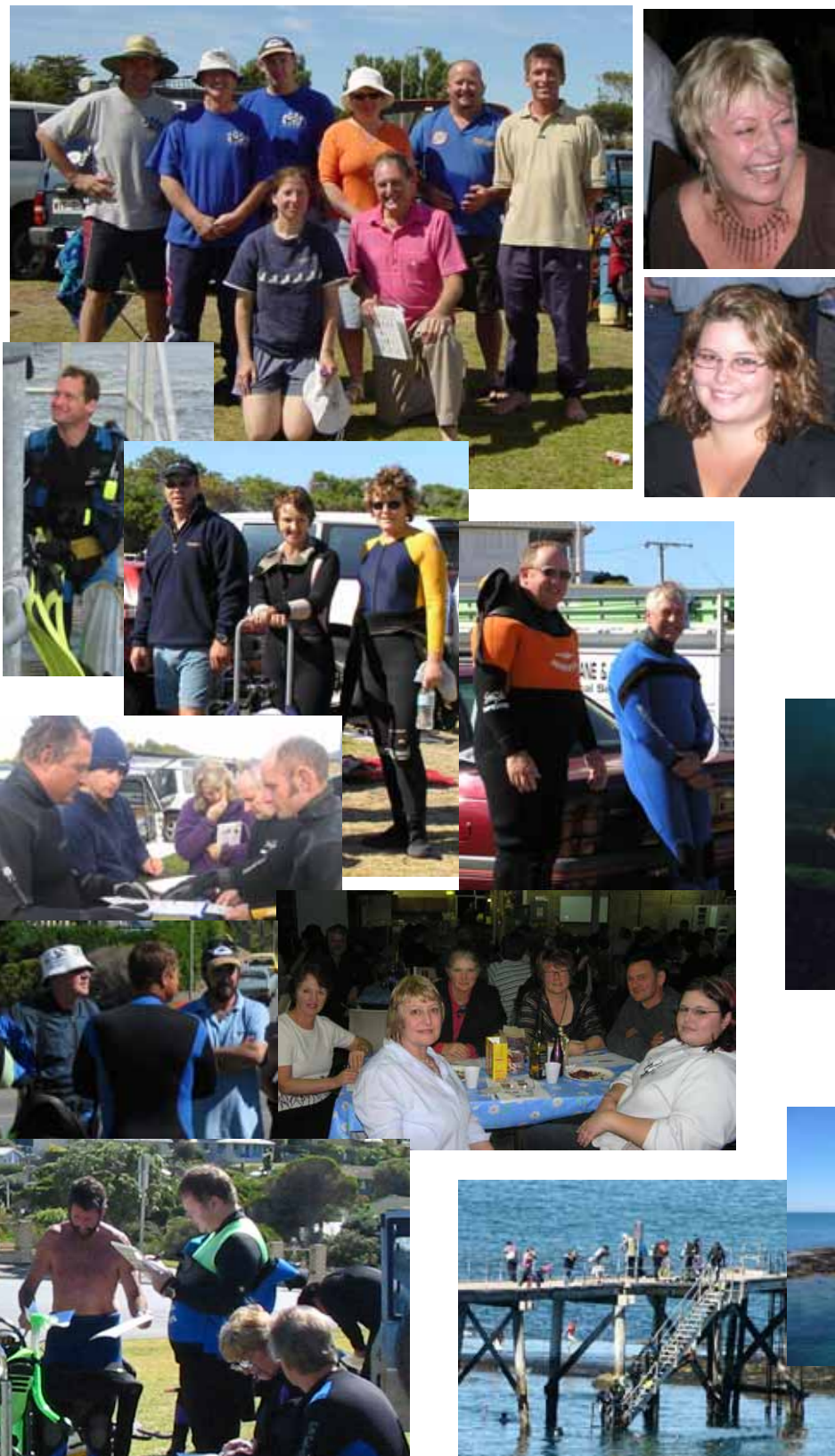
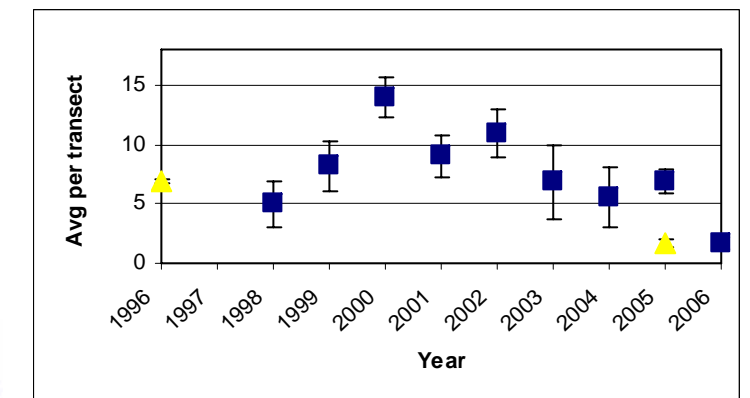
Wrasse



Bullseyes



Leatherjackets



Reef Watch is a community environmental monitoring program run by the Conservation Council of SA with extensive support from volunteers. The program is funded by the Adelaide and Mount Lofty Ranges NRM Board, and SODS have received grants from the City of Onkaparinga to support their participation. To find out more, or get involved, contact Reef Watch on 8223 5155, info@reefwatch.asn.au, or visit www.reefwatch.asn.au.

Photographs provided by: Jonathon Coulter, Haydon Maloney, Heather Bird, Brian Spalding, Steve Leske, James Brook and Mary-Anne Stacey. Fish illustrations (not to scale) are from "Sea Fishes of Southern Australia" by Hutchins, B & Swainston, R (used with permission from Swainston Publishing, Perth).