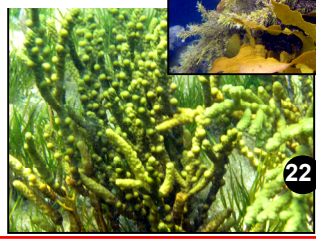
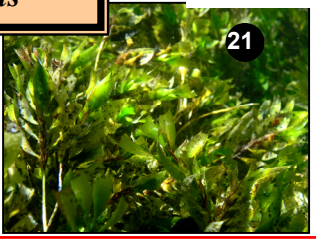


Marine life on flat, limey rock platforms of central South Australian coasts

Brown fucoid algae, *Cystophora* & *Sargassum*; blades of *Ecklonia*, 0.2-2m long, in shallow water

Sea nymph, *Amphibolis* 0.5m, in sand



25 Cave dwellers: sponges, bryozoans, territorial fish (shown is the Magpie perch, 0.3m long, that grazes algal turf in the open)

26 Kelp, *Ecklonia*, forest with Old Wives (left) and a Moonlighter fish (centre) at the reef edge

