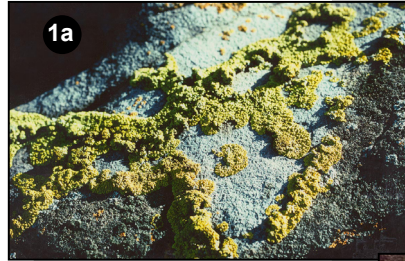


Marine life on reefs of crystalline rocks in central South Australian coasts

1 Orange lichen, *Caloplaca* species
a. actively growing
b. dormant (summer) stage



2 Grey snail, *Nodilittorina unifasciata*, 8mm

Highest tide mark

3 Barnacle, *Chamaesipho tasmanica*, 5mm



4 Barnacle, *Catomerus polymerus*, 15mm



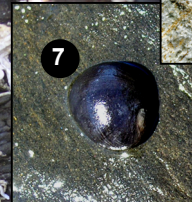
5 Barnacle, *Chthamalus antennatus*, 12mm



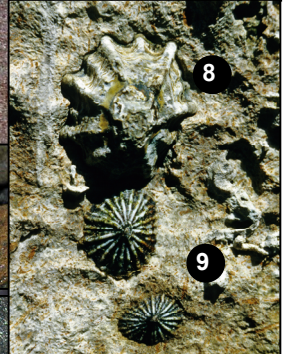
6 Limpet, *Cellana solida*, 40mm



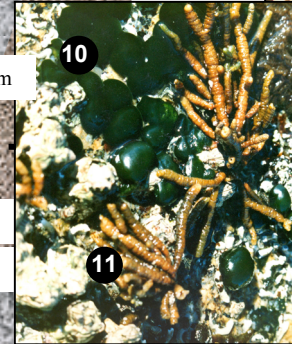
7 Periwinkle, *Nerita atramentosa*, 20mm



8 Limpet, *Patelloida*, 15mm



9 Air-breather, *Siphonaria sp.*, 10mm



10 Blue-green bacterial lozenge, *Rivularia firma*, 20mm

Mid tide mark

11 Sausage weed, *Splachnidium rugosum*, 120mm

12 Worm tubes, *Galeolaria caespitosa*, 20mm



13 Large chiton, *Plaxiphora albida*, 100mm

14 Giant barnacle, *Austromegabalanus nigrescens*, 50mm

15 Surf cystophora, *Cystophora intermedia*, 400mm

16 Algal turf, a mix of mainly coralline and other red alga



Low tide mark

17 Red algal meadows. *Melanthalia* species 300mm shown

18 Reef fish. Sweep and Leatherjacket shown

19 Shore abalone, *Haliotis rubra* & *H. scalaris*, 120mm

20 Cave dwellers. The lobster, *Jasus edwardsii* shown

21 Algal rich shallow waters on rock, with *Pentagonaster duebeni*, sea star, 110mm

22 Seagrasses, in sand. Tape grass, *Posidonia* shown

