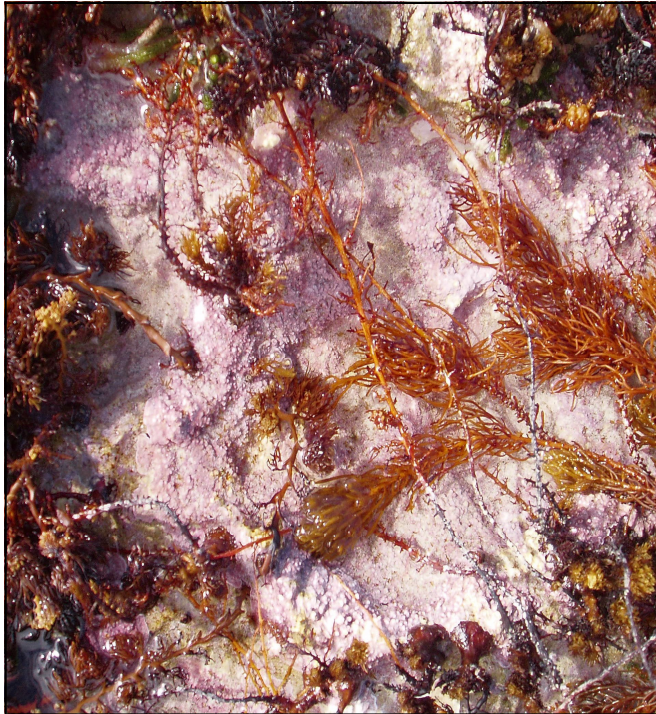


# RED ALGAE

Encrusting coralline



These can be knobbly or smooth. Ranges in colour from light pink to purple. Survey code:

Images: Kirsten Benkendorff

Turfing coralline



Coralline red algae is often pink and crunchy. It contains very small, fine, neatly jointed, calcium carbonate branches. It occurs in rock pools and on moist rock surfaces at the low-tide level. Forms distinctive limy-white tufts on the rocks when bleached. Survey code: Tur

## SEAGRASS

South Australia proudly boasts more seagrass species in one region than anywhere else in the world. Two basic types seem to frequently inhabit sandy areas on intertidal reefs:

**Left:** Short, almost lawn-like seagrass, often growing in large patches (left, below).

**Right:** Long, relatively broad and quite tough seagrass, usually found on the outer edge of the reef.

Survey code: Grass

